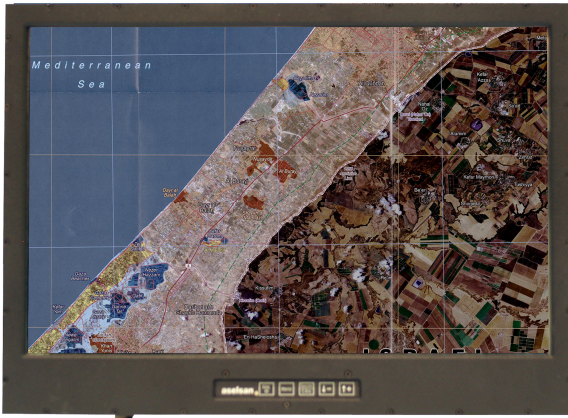




RD2120W Rugged, Wall Mount LCD



Key Features

- Rugged 20.1" displays in a VESA or wall mounted design for maximum usable space
- Weight, 28 lbs
- WSXGA+ Resolution, 500nit, low reflectance, high ambient contrast, full color TFT LCD
- Extended temperature range, +10°C to +55°C
- Kits available for EMI and humidity (MIL-STD-810F and MIL-STD-461E)
- Configuration Management option available, Designed for long-life
- OSD
- Compact and rugged package

Rugged Structural Features

All Aluminum Construction

- 6061T-651 Strain hardened structural aircraft aluminum
- 0.187 to 0.250" thk. Al cross-sections, machined
- MIL-C-5541E Class 3 Chem Film and powder coat protection

Built to Survive Shock and Vibe

- Multiple attachment points on LCD and electronics
- All fasteners and connectors retained with locking mechanisms
- Cabling dressed and secured to prevent chaffing
- LCD shock isolated and strengthened with 2mm protective cover glass

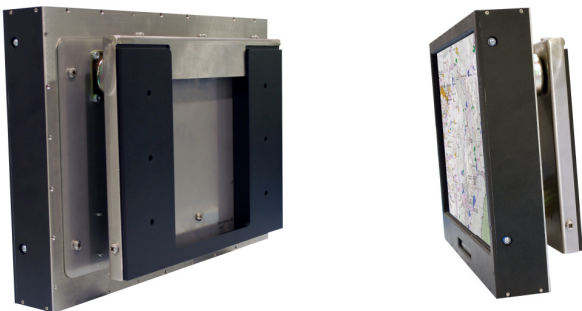
Superior Optical/EMI Performance

Optics

- 1680HX1050V WSXGA+ TN LCD
- High brightness backlight (500nit) and low reflectance cover glass (.8%) yield sunlight readability
- Conduction cooling techniques Optimized for design

EMI/EMC

- Internal compartments segregated to isolate EMI emissions
- Finish applied maintains superior EMI/EMC characteristics throughout life of the unit.
- Superior grounding paths





RD2120W Rugged, Wall Mount LCD

Military Standards (*designed to or tested to)

Operational Temperature, MIL-STD-810F, Method 501.5, Procedure I/II	+10 °C to +55 °C
Storage, MIL-STD-810F, Method 501.5, Procedure I/II	-40 °C to 85 °C
Humidity, MIL-STD-810F, Method 507.4	48 Hour, 95% RH 40-65C— with humidity kit
Altitude, MIL-STD-810F, Method 500.4	12,500ft operation, 40,000ft transport
Vibration, MIL-STD-810F, Method 514.5, Procedure I	3G _{RMS} , 5-500Hz, 75 min/axis w/isolators
MIL-S-901D, Grade B, Class 2, Type B	

Mechanical

Height	13.63" (346.1 mm)
Width	18.75" (476.3 mm)
Depth	4.90" (124.5 mm) with isolators, 2.26" (57.5 mm) without isolation
Weight	28 lbs (12.7 kg) with isolators

LCD

Manufacturer and type	AUO 20.1" Diagonal , TFT TN, normally black AMVA
Resolution	(M201EW02)
Active area	WSXGA+ 16:10, 1680HX1050V
Pixel pitch	433.4(H) x 207.9
Pixel configuration	258 (per one triad) x 0.258
Color palette	R.G.B. vertical stripe 16.7M colors (RGB 6-bits + FRC data)

Interface

Option 1	2 Channel LVDS interface compatible
----------	-------------------------------------

Keyboard

Option 1 (std)	USB keyboard interface
----------------	------------------------

Mounting Options

Option 1 (std)	Wall mount w/isolators
Option 2	VESA or RAM mount options

Power Supply Options

Option 1	120/240VAC w/PFC; Nominal power – 38W, Max power – 45W
----------	--

Optics

Viewing angle	+/- 80V, +/-80H minimum
Luminance	500 nits normal to display surface (excludes kit mods)
Contrast ratio	CR 1000:1 normal, typ
Rise and fall times (10/90 and 90/10)	16ms at 25C, GTG

* Crystal Group designs all LCDs to meet or exceed the specifications listed herein. Due to the sheer number of models and combinations of components (backlight options, kits, etc), it is not practical to test every combination of display offered. Please ask your Crystal Business Development Manager for data on qualification testing for configurations similar to the desired configuration for your application.